



USC LANCASTER MEDFORD 2ND FLOOR RENOVATIONS

USC PROJECT # H37-9512

ARCHITECTURAL
 A 1.00 COVER SHEET, LIFE SAFETY PLAN
 A 1.01 SECOND FLOOR PLAN
 A 1.02 SECOND FLOOR DEMOLITION PLAN
 E1 LIGHTING RENOVATION PLAN

2 DRAWING INDEX
 SCALE: N.T.S.

BUILDING CODE SUMMARY

Name of Project: USC LANCASTER - MEDFORD 2ND FLOOR RENOVATIONS
 Address: _____
 Proposed User: BUSINESS
 Owner or Authorized Agent: USC LANCASTER Phone # ---
 Owned By: County Private State
 Code Enforcement Jurisdiction: City County OSE

LEAD DESIGN PROFESSIONAL:

DESIGNER	FIRM	NAME	LICENSE #	PHONE #	E-MAIL
Architectural	Goodwyn, Mills, & Cawood	Michael Keeshen	--	864.272.2804	mike.keeshen@gmcnetwork.com
Civil	---	---	---	---	---
Electrical	---	---	---	---	---
Fire Alarm	---	---	---	---	---
Plumbing	---	---	---	---	---
Mechanical	---	---	---	---	---
Sprinkler-Standpipe	---	---	---	---	---
Structural	---	---	---	---	---
Other	---	---	---	---	---

YEAR EDITION OF CODE: 2012 International Building Code

BUILDING DATA

Construction Type: I-A/I I-B/II II-A/IVP II-B/IVUP III-A/VP
 III-B/VUP IV/III V-A/MP V-B/VIUP
 Mixed Construction: No Yes Types: II
 Sprinklers: No Yes NFPA 13 NFPA 13R NFPA 13D
 Standpipes: No Yes
 Fire District: No Yes
 Building Height: 41'-2" Feet Number of Stories Unlimited per _____
 Mezzanine: No Yes
 High Rise: No Yes Central Reference Sheet # (if provided): ---
 Gross Building Area (sq. ft.):

FLOOR	EXISTING	NEW	RENOVATION / UPFIT
First Floor	30000 sf	0 sf	0 sf
Second floor	30316 sf	0 sf	8868 sf
TOTAL	60316 sf	0 sf	8868 sf

ALLOWABLE AREA

Primary Occupancy: Assembly A-1 A-2 A-3 A-4 A-5
 Business Education Factory-Industrial F-1 F-2 F-5
 High-Hazard H-1 H-2 H-3 H-4 H-5
 Institutional I-1 I-2 I-3 I-4 I-5
 I-3 Use Condition: 1 2 3
 Mercantile Residential R-1 R-2 R-3 R-4 5
 Storage S-1 S-2 High-piled
 Utility and Miscellaneous Parking Garage Open Enclosed Repair
 Secondary Occupancy: Assembly

FIRE PROTECTION REQUIREMENTS

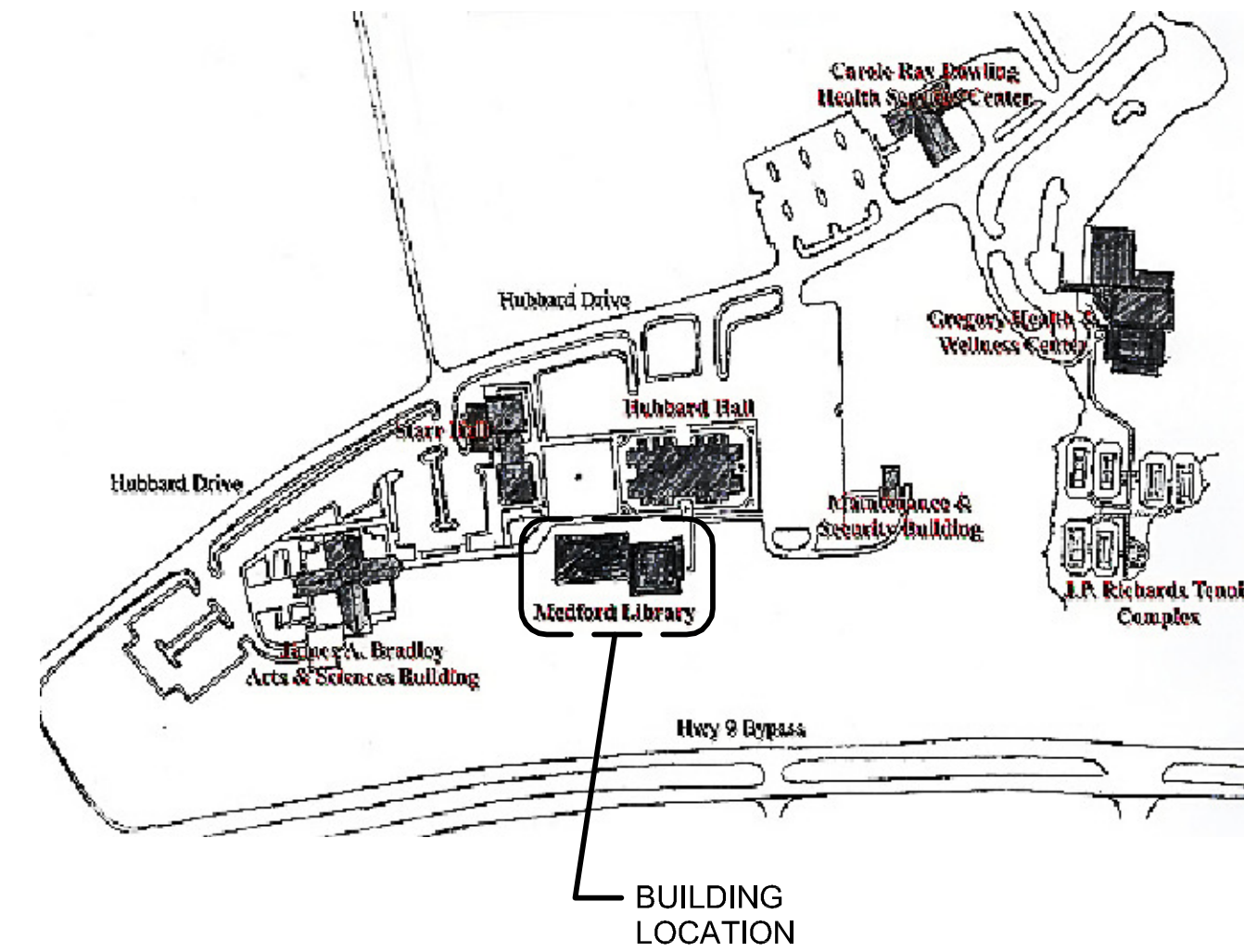
Life Safety Plan Sheet #, if provided: A1.00
 ONLY APPLIES TO THE TYPE IIB UPFIT (NO CHANGES TO THE ORIGINAL ASSEMBLY AREA).

LIFE SAFETY SYSTEM REQUIREMENTS

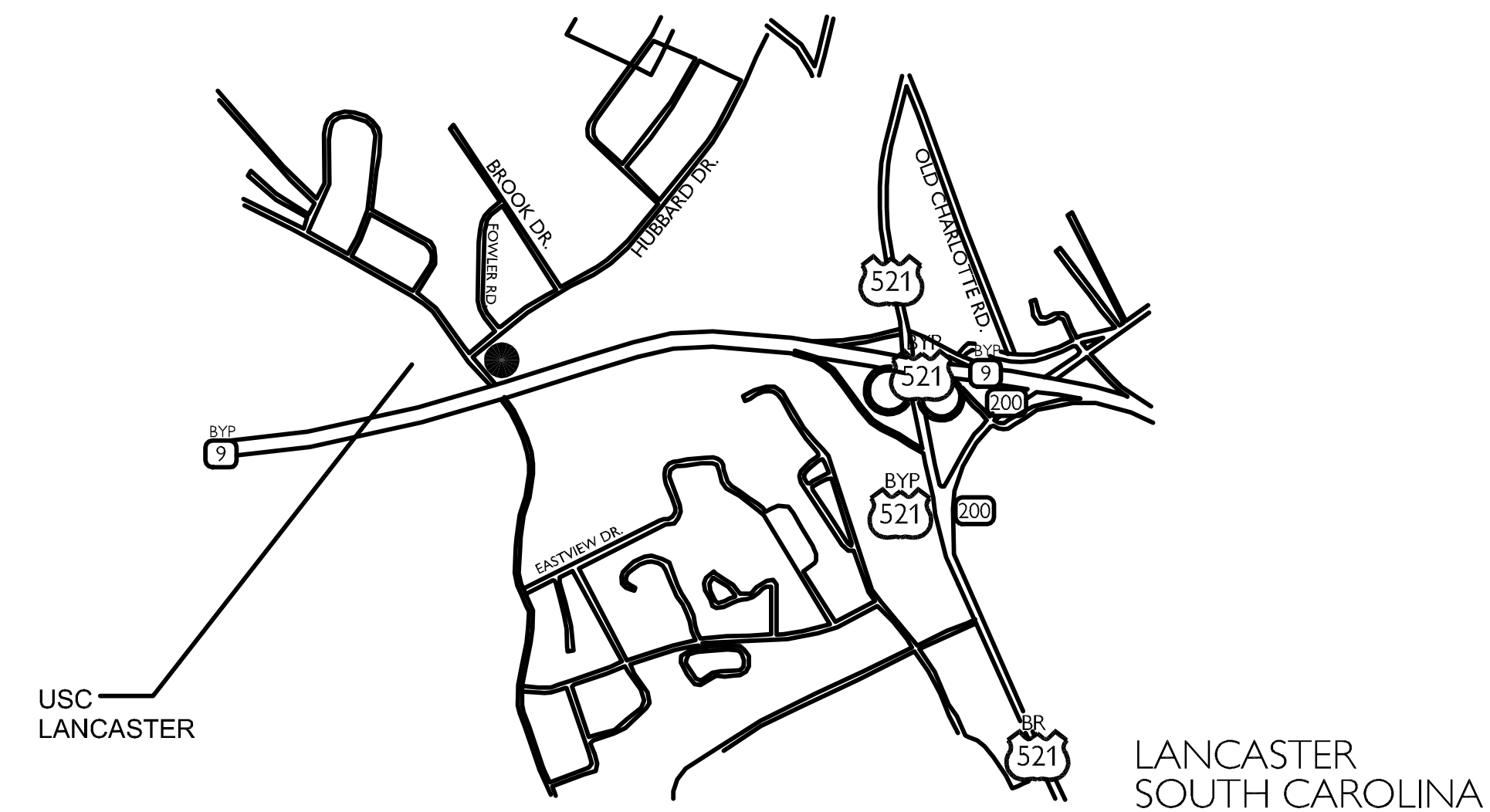
Emergency Lighting: No Yes
 Exit Signs: No Yes
 Fire Alarms: No Yes
 Smoke Detection Systems: No Yes
 Panic Hardware: No Yes
 N.C. = Non Combustible
 N.R. = Not Required
 N/A = Not Applicable

PROJECT CODE STANDARDS

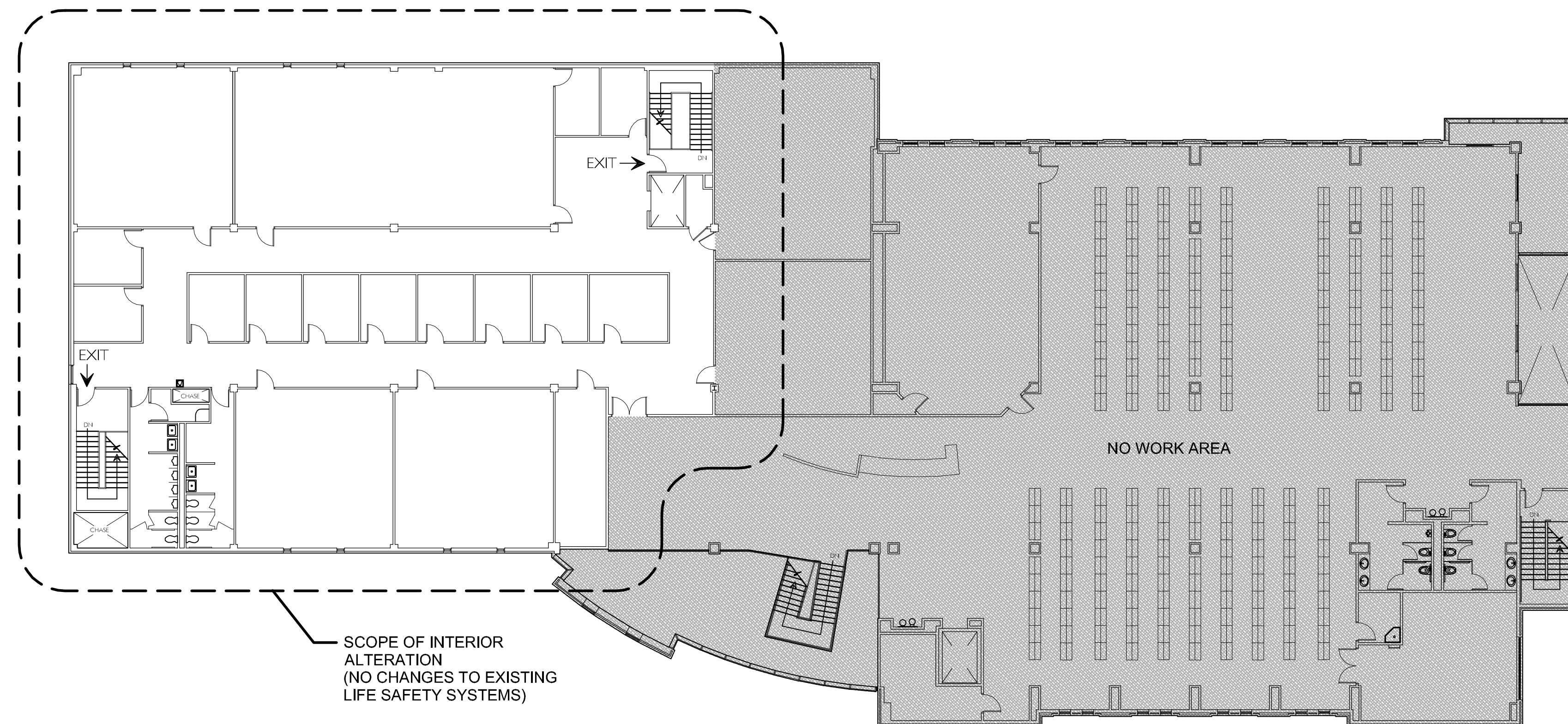
- A. INTERNATIONAL BUILDING CODE, 2012 EDITION.
- B. INTERNATIONAL EXISTING BUILDING CODE, 2012 EDITION.
- C. INTERNATIONAL FIRE CODE, 2012 EDITION.
- D. INTERNATIONAL ENERGY CONSERVATION CODE, 2009 EDITION.
- E. INTERNATIONAL FUEL GAS CODE, 2012 EDITION.
- F. INTERNATIONAL MECHANICAL CODE, 2012 EDITION.
- G. INTERNATIONAL PLUMBING CODE, 2012 EDITION WITH THE FOLLOWING INSERTIONS:
 1. SECTION 305.6.1, INSERT "24" AND INSERT "24"
 2. SECTION 904.1, INSERT "B"
- H. INTERNATIONAL PRIVATE SEWAGE DISPOSAL CODE, 2012 EDITION
- I. INTERNATIONAL PROPERTY MAINTENANCE CODE, 2012 EDITION
- J. INTERNATIONAL RESIDENTIAL CODE FOR ONE AND TWO FAMILY DWELLINGS, 2012 EDITION WITH THE FOLLOWING INSERTIONS:
 1. P2603.6.1, INSERT "12" AND INSERT "24"
- K. INTERNATIONAL WILDLAND - URBAN INTERFACE CODE, 2012 EDITION.
 NOTE: THE IUIWIC DOES NOT SUPERSEDE EXISTING STATUTORY REQUIREMENTS.
- L. INTERNATIONAL CODE COUNCIL PERFORMANCE CODE, 2012 EDITION UPON STATE ENGINEER'S APPROVAL.
- M. INTERNATIONAL SWIMMING POOL AND SPA CODE, 2012 EDITION, STANDARD FOR BLEACHERS, FOLDING AND TELESCOPIC SEATING, AND GRANDSTANDS, ICC 300-2012 EDITION.
- N. NATIONAL ELECTRICAL CODE, NFPA 70, 2011 EDITION.
- O. NATIONAL ELECTRICAL SAFETY CODE, IEEE-C2-2012 EDITION.
- P. LATEST EDITION OF THE AMERICAN NATIONAL STANDARDS INSTITUTE, INC. (ANSI) DOCUMENT A117.1, ACCESSIBLE AND USEABLE BUILDINGS AND FACILITIES.
- Q. STATE FIRE MARSHALL RULES, REGULATIONS, AND POLICIES, LATEST EDITION.
- R. SOUTH CAROLINA ELEVATOR CODE, AND REGULATIONS, LATEST EDITION.
- S. STATE OF SC TELEPHONE EQUIPMENT ROOM AND COMMUNICATIONS/DATA SYSTEMS POLICIES AS FORMULATED BY THE DIVISION OF STATE INFORMATION TECHNOLOGY.
- T. GOVERNORS EXECUTIVE ORDER NO. 82-19 (APRIL 1982) STATE OF SC BUILDING STANDARDS IN FLOODPLAIN AREAS.
- U. THE SOUTH CAROLINA MODULAR BUILDINGS CONSTRUCTION ACT S.C. CODE 23-43-10 ET. SEQ.



3 VICINITY MAP
 SCALE: N.T.S.



4 CAMPUS MAP
 SCALE: N.T.S.



5 LIFE SAFETY PLAN
 SCALE: 1/16" = 1'-0"

1 CODE REVIEW
 SCALE: N.T.S.

USC LANCASTER - MEDFORD
 2nd FLOOR RENOVATIONS

USC LANCASTER
 LANCASTER, SOUTH CAROLINA

GMC # 130050

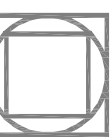
ISSUE FOR BID

COVER SHEET
 LIFE SAFETY PLAN

A 1.00
 sheet of

GOODWYN MILLS CAWOOD

101 E. Washington Street, Suite 320 | Greenville, SC 29601
 Tel 864.233.2804 | GMCNETWORK.COM



ISSUE DATE	DATE
ISSUE FOR BID	04-18-14

drawn by: PPC
 checked by: MEK



1 SECOND FLOOR PLAN
SCALE: 3/16" = 1'-0"

ROOM FINISH SCHEDULE					
ROOM NO.	WALLS				NOTES
	N	S	E	W	
214	PNT-1	PNT-1	PNT-1	PNT-1	ALTERNATE #1
215	PNT-1	PNT-1	PNT-1	PNT-1	ALTERNATE #1
216	PNT-1	PNT-1	PNT-1	PNT-1	ALTERNATE #1
217	PNT-1	PNT-1	PNT-1	PNT-1	ALTERNATE #1
218	PNT-1	PNT-1	PNT-1	PNT-1	ALTERNATE #1
219	PNT-1	PNT-1	PNT-1	PNT-1	ALTERNATE #1
220	PNT-1	PNT-1	PNT-1	PNT-1	ALTERNATE #1
221	PNT-1	PNT-1	PNT-1	PNT-1	ALTERNATE #1
222	PNT-1	PNT-1	PNT-1	PNT-1	ALTERNATE #1
223	PNT-1	PNT-1	PNT-1	PNT-1	ALTERNATE #1
224	PNT-1	PNT-1	PNT-1	PNT-1	ALTERNATE #1
225	E.T.R.	E.T.R.	E.T.R.	E.T.R.	ALTERNATE #1
226	E.T.R.	E.T.R.	E.T.R.	E.T.R.	ALTERNATE #1
227	E.T.R.	E.T.R.	E.T.R.	E.T.R.	ALTERNATE #1
230	PNT-1	PNT-1	PNT-1	PNT-1	ALTERNATE #1
231	PNT-1	PNT-1	PNT-1	PNT-1	ALTERNATE #1
232	PNT-1	PNT-1	PNT-1	PNT-1	ALTERNATE #1
233	PNT-1	PNT-1	PNT-1	PNT-1	ALTERNATE #1
234	PNT-1	PNT-1	PNT-1	PNT-1	ALTERNATE #1
235	PNT-1	PNT-1	PNT-1	PNT-1	ALTERNATE #1
237	PNT-1	PNT-1	PNT-1	PNT-1	ALTERNATE #1
239	PNT-1	PNT-1	PNT-1	PNT-1	ALTERNATE #1
H202	PNT-1	PNT-1	PNT-1	PNT-1	ALTERNATE #1
H203	PNT-1	PNT-1	PNT-1	PNT-1	ALTERNATE #1
H204	PNT-1	PNT-1	PNT-1	PNT-1	ALTERNATE #1
H205	PNT-1	PNT-1	PNT-1	PNT-1	ALTERNATE #1
ST01	PNT-1	PNT-1	PNT-1	PNT-1	ALTERNATE #1
ST04	PNT-1	PNT-1	PNT-1	PNT-1	ALTERNATE #1

2 ROOM FINISH SCHEDULE
SCALE: N.T.S.

DOOR AND FRAME FINISH SCHEDULE				
DOOR AND FRAME				
MARK NO.	LOCATION / RM. NO.	FINISH		NOTES
212	H203	PNT-2	(DOOR AND FRAME - BOTH SIDES)	ALTERNATE #1
213	H203	PNT-2	(DOOR AND FRAME - BOTH SIDES)	ALTERNATE #1
214	214	PNT-2	(DOOR AND FRAME - BOTH SIDES)	ALTERNATE #1
215	215	PNT-2	(DOOR AND FRAME - BOTH SIDES)	ALTERNATE #1
216	216	PNT-2	(DOOR AND FRAME - BOTH SIDES)	ALTERNATE #1
217	217	PNT-2	(DOOR AND FRAME - BOTH SIDES)	ALTERNATE #1
218	218	PNT-2	(DOOR AND FRAME - BOTH SIDES)	ALTERNATE #1
219	219	PNT-2	(DOOR AND FRAME - BOTH SIDES)	ALTERNATE #1
220	220	PNT-2	(DOOR AND FRAME - BOTH SIDES)	ALTERNATE #1
221	221	PNT-2	(DOOR AND FRAME - BOTH SIDES)	ALTERNATE #1
222	222	PNT-2	(DOOR AND FRAME - BOTH SIDES)	ALTERNATE #1
223	223	PNT-2	(DOOR AND FRAME - BOTH SIDES)	ALTERNATE #1
224	224	PNT-2	(DOOR AND FRAME - BOTH SIDES)	ALTERNATE #1
225	225	PNT-2	(DOOR AND FRAME - BOTH SIDES)	ALTERNATE #1
226	226	PNT-2	(DOOR AND FRAME - BOTH SIDES)	ALTERNATE #1
227	227	PNT-2	(DOOR AND FRAME - BOTH SIDES)	ALTERNATE #1
H204	230	PNT-2	(DOOR AND FRAME - BOTH SIDES)	ALTERNATE #1
231	231	PNT-2	(DOOR AND FRAME - BOTH SIDES)	ALTERNATE #1
232	232	PNT-2	(DOOR AND FRAME - BOTH SIDES)	ALTERNATE #1
233A	233	PNT-2	(DOOR AND FRAME - BOTH SIDES)	ALTERNATE #1
233B	233	PNT-2	(DOOR AND FRAME - BOTH SIDES)	ALTERNATE #1
234	234	PNT-2	(DOOR AND FRAME - BOTH SIDES)	ALTERNATE #1
235	235	PNT-2	(DOOR AND FRAME - BOTH SIDES)	ALTERNATE #1
239	239	PNT-2	(DOOR AND FRAME - BOTH SIDES)	ALTERNATE #1
H202	H202	PNT-2	(DOOR AND FRAME - BOTH SIDES)	ALTERNATE #1
ST01	237	PNT-2	(DOOR AND FRAME - BOTH SIDES)	ALTERNATE #1
ST04	H202	PNT-2	(DOOR AND FRAME - BOTH SIDES)	ALTERNATE #1

3 DOOR & FRAME FINISH SCHEDULE
SCALE: N.T.S.

FINISH LEGEND	
PAINT	
PNT-1	= SHERWIN WILLIAMS SW 7529 "SAND BEACH"
PNT-2	= SHERWIN WILLIAMS SW 7540 "ARTISAN TAN"

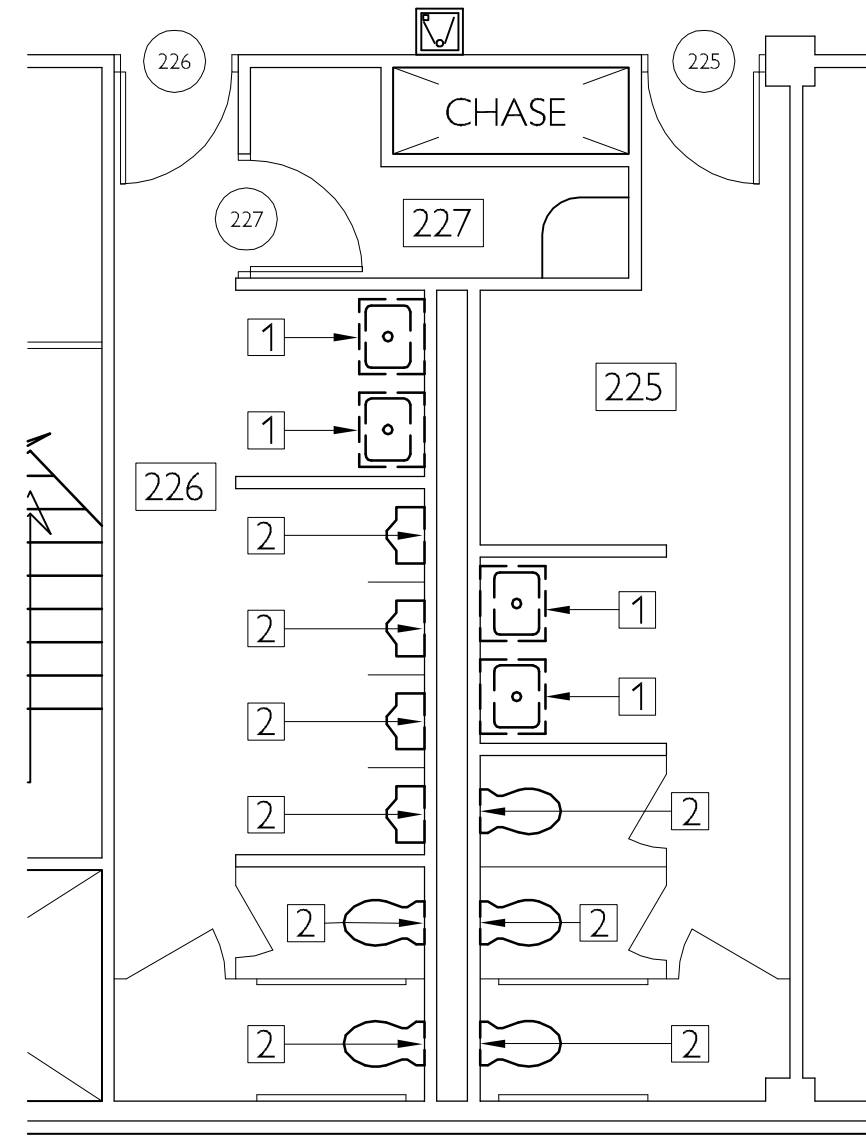
4 PLAN LEGEND
SCALE: N.T.S.

- NO-WORK AREAS
- EXISTING ROOM NUMBERS
- EXISTING WALLS TO REMAIN

5 PLAN LEGEND
SCALE: N.T.S.

1. REFER TO ELECTRICAL DRAWINGS FOR FULL SCOPE OF WORK.

6 PLAN GENERAL NOTES
SCALE: N.T.S.



1 DEMOLITION PLAN
SCALE: 3/16" = 1'-0"

- 1 REMOVE EXISTING PLUMBING FIXTURE IN ITS ENTIRETY
- 2 REMOVE EXISTING FLUSH VALVE FOR THIS FIXTURE

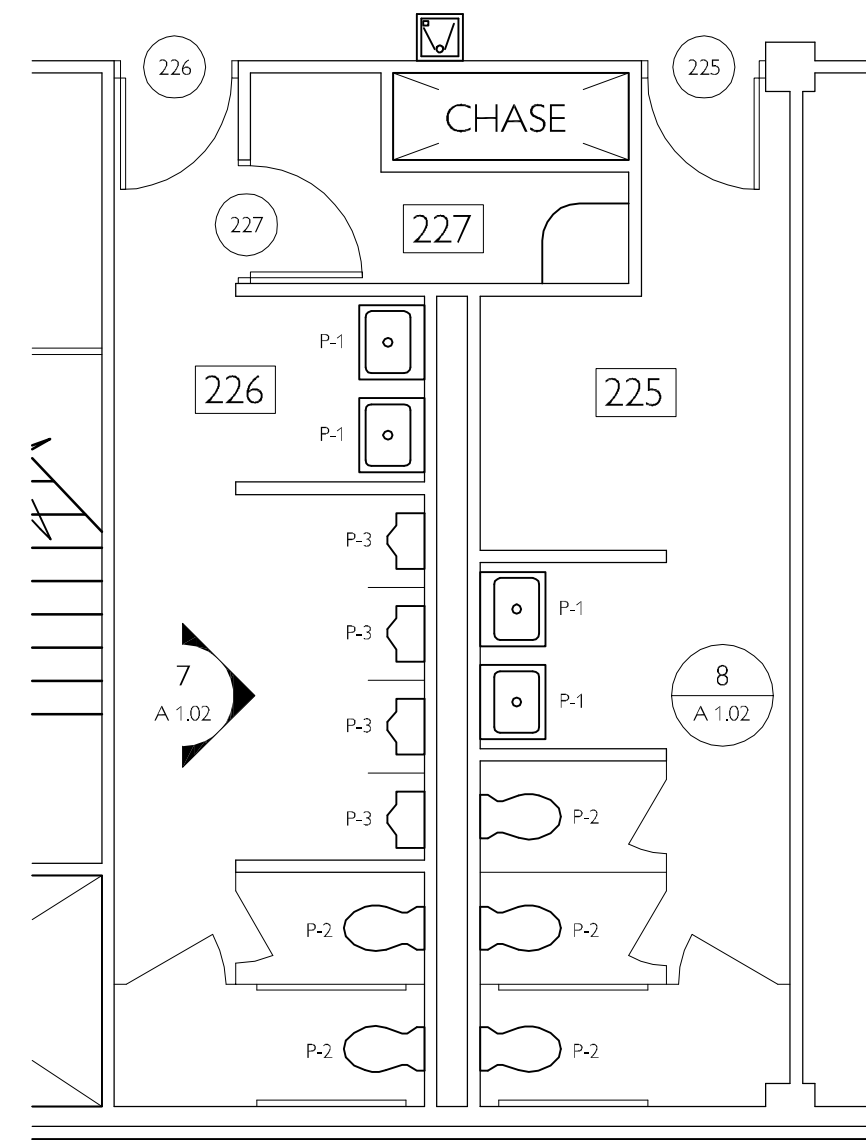
2 DEMOLITION PLAN KEYED NOTES
SCALE: N.T.S.

- NO-WORK AREAS
- EXISTING ROOM NUMBERS
- EXISTING WALLS TO REMAIN

3 DEMOLITION PLAN LEGEND
SCALE: N.T.S.

- A. ALL DEMOLITION DEBRIS SHALL BE REMOVED AND PROPERLY DISPOSED OF OFF SITE IN ACCORDANCE WITH AUTHORITIES HAVING JURISDICTION.
- B. CLEANING OF THE SUBSTRATES, SUBSTRATE SURFACE PREPARATION, AND INSTALLATION FOR ALL NEW FINISH MATERIALS TO BE IN ACCORDANCE WITH MANUFACTURER PRINTED RECOMMENDATIONS.
- C. REFER TO ELECTRICAL DRAWINGS FOR FULL SCOPE OF DEMOLITION.

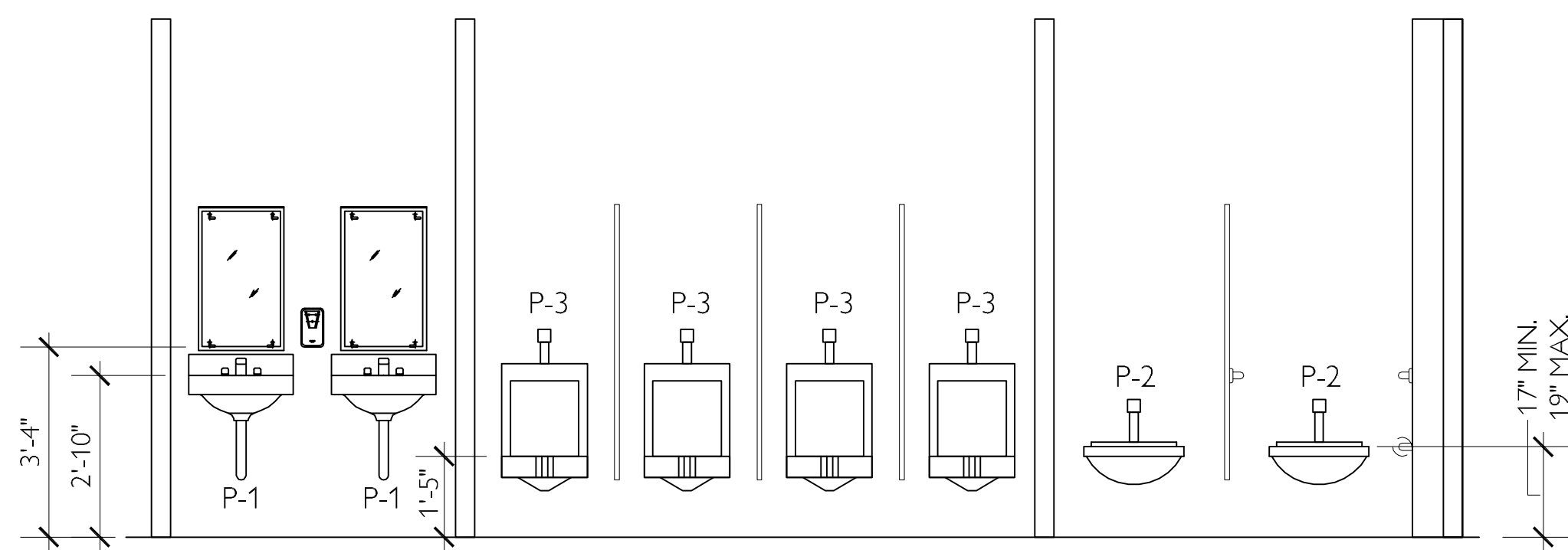
4 GENERAL DEMOLITION NOTES
SCALE: N.T.S.



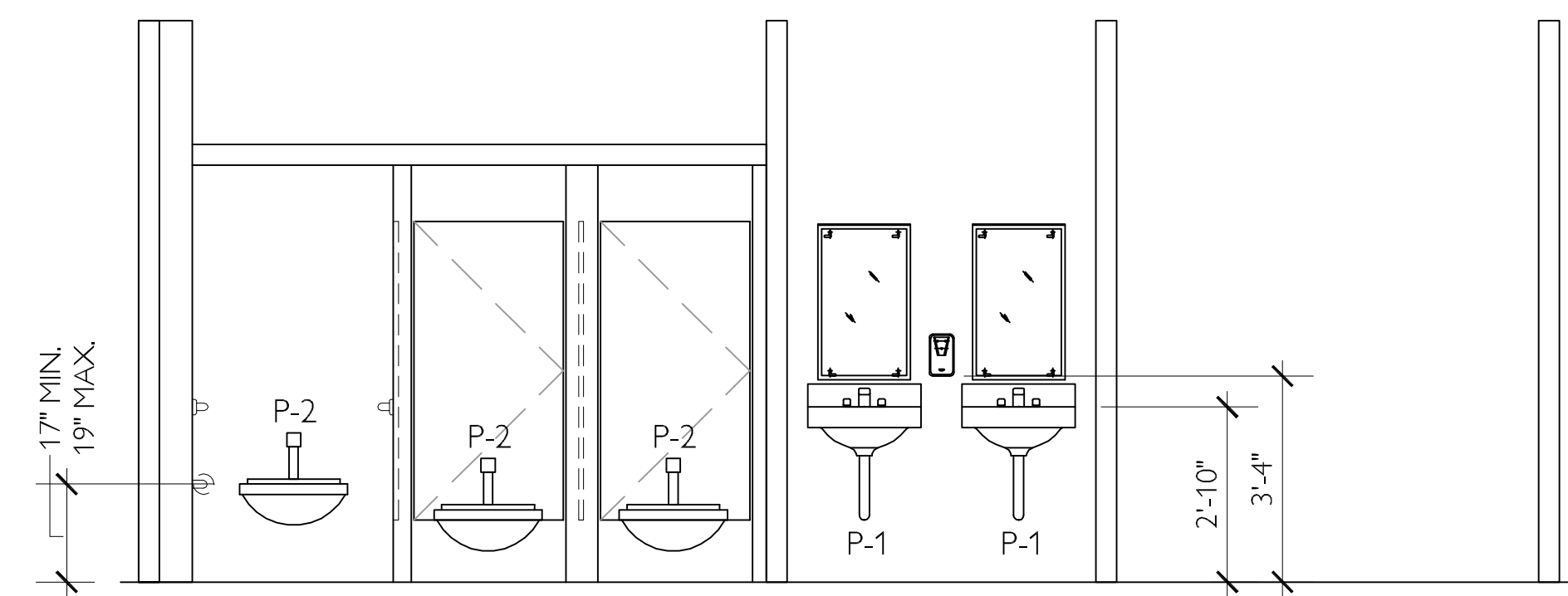
5 FLOOR PLAN
SCALE: 3/16" = 1'-0"

PLUMBING FIXTURE SCHEDULE		
NO.	FIXTURE	DESCRIPTION
P-1	WALL MOUNT LAVATORY AND FAUCET	<ul style="list-style-type: none"> • EQUAL TO KOHLER CHESAPEAKE WALL-MOUNT LAVATORY, K-1722 • EQUAL TO ZURN AQAUSENSE SENSOR FAUCET, Z6915 • EQUAL TO ZURN SOLID TOP OPEN-GRID PULL OUT PLUGS • EQUAL TO ZURN SEMI-CAST P-TRAPS WITH WALL BEND • EQUAL TO ZURN STANDARD STOP WITH FLEXIBLE LAVATORY SUPPLY • EQUAL TO JONES STEPHENS CHROME PLATED NIPPLES & PIPE LENGTHS, 90 & 45 DEG ELBOW & STREET ELBOW, TEE • EQUAL TO IPS CORPORATION LAVATORY GUARD FAST FIT UNDERSINK PIPING COVERS
P-2	FLUSH VALVE FOR WATER CLOSET	<ul style="list-style-type: none"> • EQUAL TO ZURN AQAUSENSE AV MODEL, ZER 6000AV-WSI • VERIFY ROUGH-IN
P-3	FLUSH VALVE FOR URINAL	<ul style="list-style-type: none"> • EQUAL TO ZURN AQAUSENSE MODEL, ZER 6001-AV-CPM • VERIFY ROUGH-IN

6 PLUMBING FIXTURE SCHEDULE
SCALE: N.T.S.



7 INTERIOR ELEVATION
SCALE: 3/8" = 1'-0"



8 INTERIOR ELEVATION
SCALE: 3/8" = 1'-0"

